

The MUZZLEBLAST

MUZZLEBLAST

One of Florida's Largest Gun Clubs with well over 3,000 members

Volume 2026, Issue 1

March 2026

John Whitten Retires

By Bill Edwards, President

After 19 years of caring for and maintaining the ranges, buildings and roads at GRPC, John Whitten retired as of February 6, 2026. I sat down with John before he retired and found out some interesting history about him.

John Whitten was born and raised right here in Jacksonville, Florida. He graduated high school in 1964 at the age of 17. John has been married to his wife Linda for 48 years. John and Linda raised two children, Tara and Derrick.

John started out his professional life in 1964 at Genuine Parts Co., which is now known as NAPA, as a machinist. While working as a machinist, he also joined the Army National Guard part time. In 1985 John joined the Air National Guard where he went full time as a technician. After climbing the ranks to an E8 Senior Master Sergeant and doing so while shooting on the Air National Pistol Team, John aged out of the Air National Guard in September 2006, just before his 60th birthday.

John, having a love for shooting, joined GRPC back in 1984. It only made sense that in December 2006 he would take on a two-day a week position as a Range Safety Officer at GRPC. In 2014 he was offered and accepted the Range Manager position where he remained until February 6, 2026.

John made a huge impact on our facility over the years he spent here. He made many friends and as everyone who knows him agrees, he is a great guy. We want to wish John our best and thank him again for his

dedication. He plans on shooting more now that he has the time so we can look forward to seeing him on the range. When you do see him, ask him about his marathon days. I understand he was pretty good at it.

Best wishes and thank you John.

IR 50/50 22 Benchrest Monthly Match

By Russ Ost

This is a reminder that our March matches will be held on Saturday, March 7th. As always, for those that plan to participate in future matches, I will need to know by the Sunday prior to the match who is planning to shoot these matches. Send me an email with the following information:

1. That you plan on participating,
2. Whether you are planning to shoot one (A or B) or both of the matches,
3. Which rifle classification you will be shooting.

I will assign benches to the shooters that respond by that same Sunday, end of day, any who would like to shoot but did not respond to this email, will have to show up on day of the match by 7:30 to see if any benches are available. To assist in making room for parking, please park as close to your assigned bench as possible.

Please plan to be at the range by 7:30 so that you can be set up on your bench and have your target and flags set up by 7:45. The range will then be called "Hot" at that time so that the participants can move their unloaded rifles to the bench (this will only be for moving the rifles

to the benches and for cleaning if necessary - No Shooting).

We will then begin at 8:00 with a 5-minute sighting period and will begin Match A immediately following the sighting period. We will begin Match B immediately after completing the scoring for Match A, approximately 10:00-10:15. For those who are new to our IR5050 matches, the entry fee for each match is \$10.00, so \$10.00 for either A or B match or \$20.00 to shoot both.

I look forward to seeing you at the range on the 7th. For those of you who are last month's winners, please remember to bring the monthly trophies to this match.

Gateway Rifle and Pistol Club to host the 34th Annual Dixie Match April 11 & 12, 2026

By Ted Carter

The Dixie Match has long been a favorite "Bullseye" Pistol competition for many shooters. It continues to be the premier NRA individual and team Regional event in the southeast. This year the Dixie Match will be held at Gateway's 25- & 50-yard range facility on April 11 & 12.

The Dixie Match combines an NRA Regional Precision Pistol Championship with a .22 Caliber Only Aggregate Match, NRA Distinguished Revolver Match, CMP Service Pistol EIC Match and CMP .22 RIMFIRE EIC Pistol Match. That's a lot of shooting over two days. In addition to attracting shooters from Florida, Georgia South Carolina and Alabama, the Dixie Match has attracted shooters from Virginia, Maryland, Pennsylvania, and several other states. The Army

Marksmanship Unit, National Guard and the Marine Corps Reserve Pistol teams have participated in this match.

Jacksonville's great weather is one reason shooters like competing at the Dixie's, but most importantly, shooters like the impressive range facilities and the professionally run match. Gateway's Board of Directors has been very supportive of the match. The range maintenance crew does a fantastic job getting the range in top readiness condition to host the match. The Range Officers and the office staff go out of their way to welcome the Dixie Competitors. The match staff, made up of volunteers, has consistently received outstanding comments from the competitors on running the match. Without dedicated volunteers, the Dixie Match could not be held. If you would like to participate in or help (we can use volunteers) with the Dixie Match, please contact Ted Carter at cdrcoach@reagan.com.

The monthly "Bullseye" Pistol match held on the third Sunday of the month beginning at 9:00 am is an excellent way to get ready to shoot the Dixie Match. For information contact Ted Carter.

All GRPC members please note: Please be aware that parking in the vicinity of the 25- & 50-yard pistol range will be crowded due to competitors and volunteers supporting the match. Parking next to the shooting bays will remain open to members. Thanks in advance for your patience.

Attention all Pistol Shooters! Join the fun at GRPC on the 1st and 3rd Sundays at 9:00 AM

By Ted Carter

Has it been a while since you shot your pistol or revolver, or did you get something "good" for Christmas? Do you remember the fun of shooting your pistol and enjoying a little range time with your fellow shooters?



Then this is your 2026 invitation to spend a couple of hours on the range and have some fun with your pistol along with other shooters.

Gateway holds two pistol events every month. On the first Sunday of the month, we meet at the 25/50-yard pistol range and start shooting at 9:00 AM. We'll end by noon, just in time for lunch. We shoot the Florida Police Officer's Association (FPOA) course, which is 90 rounds, fired on paper targets at 25 yards for slow fire and 15 or 25 yards (weather permitting) for timed and rapid fire. We begin with the .22 caliber pistol/revolver and then shoot the course again with a Center Fire pistol/revolver (.32 - .45 caliber). But not to worry, if all you brought was your .22, you are welcome to shoot the course again. We also call this the fun match, as our goal is to have fun and provide a venue that allows you the chance to shoot your match conditioned pistol or "out of the box" pistol with other beginner, or not so beginner shooters in a relaxed environment. You may shoot with one hand or with both hands, however you are most comfortable. If you're not ready to shoot the NRA Precision Pistol match or just want to come out and shoot your pistol with other shooters, then this is your event. The cost to shoot is \$10.00, and Gateway provides targets and backers.

On the third Sunday of the month, starting at 9:00 AM, we meet at the 25/50-yard pistol range to shoot an NRA or CMP 1800 or 2700 Precision "Bullseye" Pistol match. This match is traditionally shot one hand at 50 yards for slow fire and at 25 yards for timed and rapid fire. While it's more challenging than the FPOA shoot, the different NRA/CMP Classifications that are based on your ability, offer anyone the opportunity to join in the fun. The cost to shoot is \$15.00 to cover the NRA/CMP fees, and Gateway provides the targets and cardboard backer. We'll finish around noon and then head to lunch.

With the NRA rule changes, shooters can register in one of two divisions, Metallic or Open. To invite more

shooters to try the sport of Precision Pistol, formally called Conventional Pistol, but more commonly known throughout the community as Bullseye Pistol, the NRA introduced the two divisions several years ago. The Open Division includes any semi-automatic handgun or revolver using any sights, including telescopic, except for those sights that project an image on the target. Like the Open Division, the Metallic Division includes .22 caliber, up to and including .45 caliber pistols and revolvers. As its name implies, the authorized sights are metallic, no optic sights are permitted. The pistol may also be match conditioned. There are a few other restrictions, and as with all pistols or revolvers, all "operational" safety features of the guns must operate properly. For 2026 Gateway is offering two CMP Match Pistol events. The CMP Match Pistol rules are very similar to the NRA rules and competitors will have the opportunity to establish or build on their CMP classification.

If all you have is a .22 caliber pistol, both the NRA and CMP allow you to compete in the 22 Caliber Only Aggregate Match. NRA Precision Pistol rules can be found at: https://competitions.nra.org/media/10579/2026-precisionpistol_rulebook.pdf. CMP Match Pistol rules can be found at: <https://thecmp.org/wp-content/uploads/2025/12/2026-Bullseye-Pistol-Rules.pdf>.

If you are looking to start "Bullseye" style pistol shooting or get back into it and are not sure how to get started, contact Ted Carter: cdrcoach@reagan.com or 904-880-1715. We are always looking to welcome new shooters, old shooters, junior and women shooters.

See you at the range.



Are Cowboy Pistols Relevant Today

By Willie Whiskers

The Single Action Revolver (SAR) has outlived the old west, but with all the technology, new materials and emphasis on capacity and quick reloading, are they anything more than a wall hanger?

In this time of polymer-frames and the ubiquitous 9mms the old cowboy gun still stands tall. It is not the first gun you think of for self-defense. It is big, heavy, but shooting is a lot more than just double tap. The SAR is simple, reliable, versatile and the OG of all wheel guns.

Compared to modern semi-autos, they have few moving parts. Fewer things go wrong, even in rough conditions. No mags to drop, no slide jams, no stove pipes. A solid low-maintenance firearm.

There is an opinion that because a gun is not modern, then it is less accurate. Just not true. Wild Bill Hickok dropped Dave Tutt at 75 yards in 1865 with his .36 caliber cap and ball Colt Navy. These guns were designed to be accurate on day one. Soldiers, lawmen, and even outlaws staked their lives on having a gun that would hit where aimed. The ability to put lead on target has not faltered since the Colt Paterson Revolver in 1836.

As a rural or woods gun the SAR is a solid choice against most animals one is likely to encounter depending on the caliber. There is something comforting about having a big iron on your hip. Not to mention ripping off a few rounds out in the wilderness is pretty satisfying too.

For all the fellows who like to draw fast and unload a mag in short order, this is not the gun for you. Having to pull the hammer for every round makes for slower firing. This is not a bad thing. It is one of the factors that promotes accuracy. It gives time to consider the shot.

One well-placed round is much better than spraying bullets and hitting little. Interestingly, a proficient cowboy shooter can cleanly hit ten targets in 4 or 5 seconds.

One of the pluses of the SAR is the versatility of ammunition. From .22, through 38/357 Magnum, and onto the 45 Colt, there is a round for just about anything you want to do. Plinking, target shooting, hunting, this gun can do it all. There are even cylinders for 9 mm and 45 ACP.

There is a reason why these pistols are called “shootin’ irons”. Even in these times, SARs are made of tough stuff. Steel parts, no little plastic bits to shear off at the worst time. They still must be maintained as any gun would, but maintenance is minimal. They are robust and if there is a gun that is likely to outlive you, it’s a cowboy gun.

Now we come to the big bugga-boo. No, you cannot just pop another mag in and keep firing. And if 30+ round mags are your thing, there are other pistols for you. 5 to 6 rounds are all you get and unloading/reloading is time consuming. Although, the brake-top models like Schofields unload quickly. However, as we have pointed out before, it just takes one well-placed shot to do the job. There are people who still carry the SAR concealed.

For the handloaders and tinkerers out there. This gun is a natural and very forgiving. They can be modified with lighter springs, lower hammers, costume grips and made to fit the whims of their owners. Unlike many semi-autos, old style revolvers can be gun smithed at home.

As Willy Whiskers is authoring this article, one would expect a comment about Cowboy Action Shooting. The heart and soul of the Single Action Shooting Society (SASS) is the 6-gun. It is the iconic weapon of the old west and the pride of every shooter. SASS is an international shooting sport and after 40 years, it is still drawing new shooters every weekend.

Sure, we look cute in our chaps and frills, but the skills we develop in Cowboy follow into other shooting disciplines. Hitting small targets with powerful rounds, competing under the clock, timing, transitioning from one gun to another are all skills that make Cowboys able competitors. If you are curious, The Cowford Regulators meet every 4th Saturday on Range 5.

A modern company, Ruger came out with their own version of the SAR in 1955 the 357. The Blackhawk is alive and well today and has taken its place alongside the Colts and Schofields of old. In 1953 they came out with the Single-Six in .22. Today, most of these guns are made overseas, but with no diminished quality. They can take a pounding just like their great grandfathers.

Our original question was whether the single action revolver has a place in the age of our modern firearms. These guns have a history that is unmatched in longevity and capability. They perform as sound firearms today as they always have. They have their own place to shine, as each gun does, but relevant? They certainly are.

No Fully Automatic Firing at GRPC

by Randy Erickson

Given all the changing technologies around modifications to firearms that make them "go fast" i.e. replicate "fully automatic" firing, now seems like a good time to briefly review Gateway's policy on this topic.

Many members probably believe that Gateway does not allow machine guns to be fired on our ranges. This is close, but not quite technically accurate. Actually, what we restrict is the firing of any firearm in "fully automatic mode", in other words at very high rates of fire. So, if you have a "select fire" machine gun, you can actually fire it here as long as it is in semi auto mode only. DO NOT be tempted to impress your buddies by squeezing off a

burst in Full Auto Mode or you will be leaving the Range and probably expelled from the Club.

What this also means is that none of the new "go fast" inventions like bump fire, forced reset triggers, binary triggers, etc. are allowed here. This is not about your constitutional rights and what the ATF or State of Florida allows you to use. This is about what has been deemed safe to use here at Gateway given our range design and our location inside a major suburban area. You are free to exercise your constitutional rights to full auto types of firearms, you just need to do it at a different range than Gateway. Here at Gateway, safety always comes first.

A JSO Encounter with a Suspect in The Late 1970s

By Glen Outlaw shared by Gary Kight

In the late 70's, I had been with the JSO about 3.5 years. Early one weekend morning, I assisted another officer on a "silent alarm" in the Talleyrand Ave area. We quickly observed a broken-out window and heard a suspect just inside this window. We waited a few minutes without saying anything. Suddenly, a pair of feet appeared and started to exit the building. When the body was about 1/2 way out, my partner "racked" his shotgun which, in the still of the night, made a very distinctive sound. For several minutes, no one said a word until suddenly a very weak voice stated, "officer, if I promise to give up peacefully, if you promise not to shoot me!!"

My partner called out to him, "done deal". The suspect gave up very peacefully as he promised. Later the suspect made a comment that he had heard a shotgun racked many times in the past but he also said, when he knew it was meant for him, it had a "hellva" different sound!!!

Special Duty with Air Force Thunderbirds

by Mike Russell, Master SGT shared by Gary Kight

In 1970, while stationed at Eglin Air Force Base, I attended a United States Air Force Thunderbird Air Show. Inspired by their performance, I applied for special duty hoping to be selected for the team. A year later, I received a call informing me that I had been chosen.

Although I had married during that year and my wife was expecting our first child, we decided to accept the assignment at Nellis Air Force Base. In October 1971, I officially joined the team. There were only two enlisted members in my career field assigned to the unit.

The team performed more than 100 demonstrations each year, from March through the end of November. During the winter months, we trained incoming pilots. Our Air Shows took place at both civilian venues and military installations, and enlisted personnel traveled to show sites aboard Air Force cargo planes, transporting equipment and spare parts.

In 1973, we completed 17 Air Shows across 12 countries in South America. My tour concluded in January 1975, and this assignment remains one of the most rewarding experiences of my 22-year career in the Air Force.

Where To Shoot What at Gateway

By Randy Erickson

DAY MEMBERS and ANNUAL / LIFE MEMBERS: RANGES 1 & 2

RANGE 1, PISTOLS and REVOLVERS: Located to far left as you exit the club store.

No rifles or shotguns allowed

NO FIRING OF HIGH POWER RIFLE ROUNDS (i.e. 223, 556, 7.62x39, 308, etc.) ALLOWED ON RANGE 1

RANGE 2, as follows: Located slightly left as you exit the club store.

BENCH SHOOTING ONLY

RIFLES, CARBINES, AR and AK style pistols with arm brace: All positions except 27 & 28: All calibers including rimfires, pistol calibers, high power/centerfire calibers, and black powder. AR and AK pistols must be fired supported from bench.

SHOTGUNS with shoulder stocks:

Positions 1-26: For shotguns with iron sights or optics, i.e. not a "bead" only front sight and must shoot slugs or turkey loads
Position 27: This position is for "patterning" birdshot loads. Ammunition must be #6 through #9 shot.

Position 28: This position is for function checking. Ammunition must be #6 through #9 shot.

SHOTGUNS without shoulder stocks:

Position 28 only: This position is for function checking. Ammunition must be #6 through #9 shot.

ANNUAL AND LIFE MEMBERS ONLY: RANGES 3-8

PISTOLS AND REVOLVERS:

RANGES 5 and 7 including the 25/50-yard Bullseye range: Pistol caliber ammunition only.

NO FIRING OF HIGH POWER RIFLE ROUNDS (i.e. 223, 556, 7.62x39, 308, etc.) ALLOWED ON RANGES 5 and 7.

RANGE 4B: Barrels must be 2-inch minimum length. Pistol caliber ammunition only.

NO FIRING OF HIGH POWER RIFLE ROUNDS (i.e. 223, 556, 7.62x39, 308, etc.) ALLOWED ON RANGE 4B.

RANGE 4A: Barrels must be 10-inch minimum length.
HIGH POWER RIFLE CALIBER ROUNDS ARE NOT ALLOWED.

RANGE 3: Must be capable of accurate fire at 200-yards.
High power rifle caliber rounds ARE allowed.

AR15 AND AK47 STYLE PISTOLS WITH ARM BRACE:

RANGES 2, 4A, and 8: Must be supported/aimed fire from bench. High power rifle caliber rounds ARE allowed on Ranges 2 and 8,
PISTOL CALIBER AND BLACK POWDER ONLY ON 4A.

HIGH POWER RIFLES:

RANGES 2 and 8: Firing allowed sitting at bench only.

RANGE 3: Firing allowed standing, sitting, prone and sitting at bench.

PISTOL CALIBER AND BLACK POWDER RIFLES AND CARBINES:

includes .17 and .22 Rimfire, .38, .44 and .45 but not .223, .556, 7.62x39, 30-30, 308, etc.
RANGES 2, 3, 4A, 4B, 5, 8, and 7 including 25/50-yard Bullseye line.

SHOTGUNS:

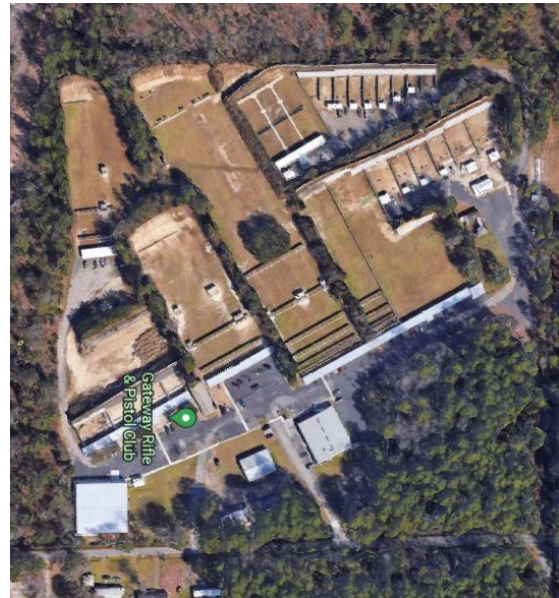
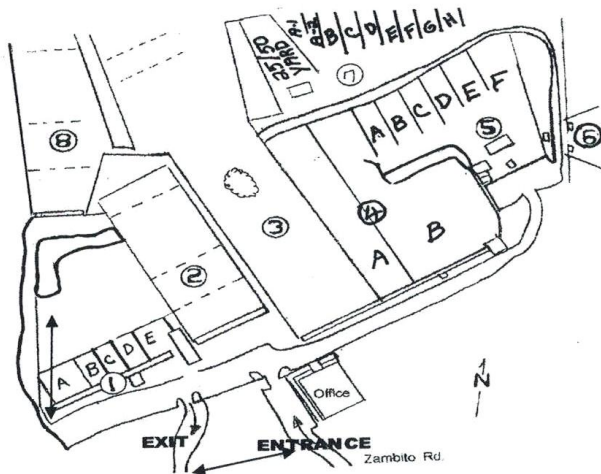
RANGE 6: Use clay pigeon targets and birdshot ammunition with #6 through #9 shot. Slugs, buckshot and #4 shot not allowed. **NO RIFLES OR HANDGUNS ALLOWED.**

RANGES 5 and 7: Use with paper targets, clay pigeon targets not allowed.

ARCHERY: RANGES 5 and 7

See the next page for a range map and details on the different ranges

RANGE MAP



Range Details:

Range 1: 7- and 15-yard pistol range, **Day members allowed**

Range 2: 100-yard line primarily for rifles, **Day members allowed**

Range 3: 200-yard line primarily for rifles

Range 4A: 100-yard line primarily for rifles, **pistol calibers and black powder only**

Range 4B: Silhouette range, **pistol calibers and black powder only**

Range 5: General purpose bays, **pistol calibers, black powder and shotgun only**

Range 6: Shotgun with birdshot only, **no pistols, black powder or rifles**

Range 7: General purpose bays, **pistol calibers, black powder and shot gun only**

NOTE: FIRING OF "HIGH POWER" RIFLE AMMO LIKE AR/AK .223, 5.56 OR 7.62x39, etc. ON THE 4B SILHOUETTE RANGE, OR RANGES 5, 6 AND 7 WILL LIKELY RESULT IN LOSS OF MEMBERSHIP

CLUB INFORMATION

Gateway Rifle & Pistol Club

9301 Zambito Ave. N
Jacksonville, FL 32210

904.771.2937

www.GRPC-JAX.com

Where to Shoot

Day Members or Annual and Life Members

Ranges 1 A-B-C-D: Pistols only with pistol calibers. Location: Far left (West) as you leave front office, 53 positions at 7/15 yards

Range 2: Rifles at 25-50 and 100 yards and shotguns on select positions

Annual and Life Members Only

Both of above two ranges, #1 and #2

Range 3: Rifle 50- and 200-yards and Pistols with 10 inch Barrels or longer chambered for rifle cartridges

Range 4A: Same as Range 3 except 100-yards only

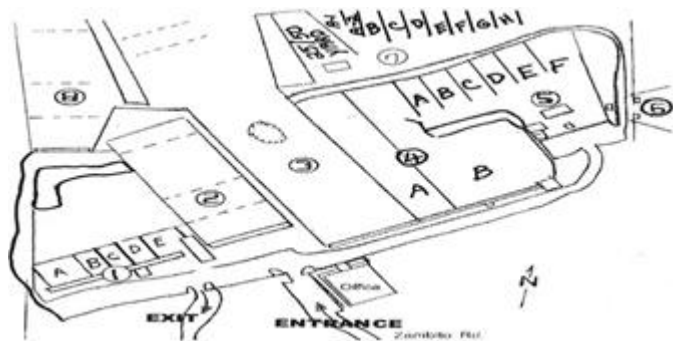
Range 4B: Rifles in rim fire .22 cal, .17 cal plus black powder rifles

Range 5 A-B-C-D-E-F: All-purpose ranges for Pistols and Rifles with Pistol Calibers

Range 6: Shotgun Skeet Range with only #6 to #9 Shot

Range 7 A-B-C-D-E-F-G-H: All Purpose ranges for Pistols and Rifles with Pistol Calibers, 25-/50-Yard Pistol Match Range, Pistols and Rifles with Pistol Calibers

Range 8: Rifle, 25-, 50- and 100-yard Rifle targets



ID BADGES

All Shooters:

Annual, Life, and Day Members must wear ID badges at all times when on the Club property.

2026 Slate of Officers

Officer	Name	Contact Info
President	Bill Edwards	pres@grpc-jax.com
Vice President	Bill King	
Secretary	Randy Erickson	
Treasurer	Susan Carter	

2026 Board Members

Tim Allen	Doug Havens
Carl Berg	Gary Kight
Walt Gallahan	Alan Rosner
Don Hardeman	William Todorsky
Tim Hardy	
Emeritus Directors:	
Bill Craig	
Sam Grimes	
Allen Way	

Range Maintenance Schedule

Day	Time	Range
Monday	0800-1100	100-yard Rifle Range
Tuesday	0800-1100	All Pistol Ranges
Wednesday	0800-1100	Silhouette Range
Thursday	0800-1100	200-yard Rifle Range
Friday	0800-1100	All Multi-Purpose Ranges and New 100-yard Rifle Range

Note: Subject to change based on maintenance need

Gateway Rifle & Pistol Club, Inc.

A private Club operated since 1965, providing a safe environment for the sport of shooting. We offer annual memberships allowing unlimited use of the shooting ranges and daily memberships for the occasional shooter limited to certain ranges. The Club is open 7 days a week from 8:00 am until near dusk except Easter, Thanksgiving, and Christmas. There are numerous pistol ranges at various distances for shooting paper targets and steel plates. The rifle ranges provide 25, 50, 100, and 200 yard shooting positions. For those interested in competition there are monthly matches for small bore, black powder, .22 50/50 Benchrest, bullseye pistol, 3x20 prone, NMC and Cowboy, etc.

There is an active junior program and women's program. The facilities include the rifle and pistol shooting positions, a large club house, meeting rooms, and a store selling those items you may need at the range including targets, ammunition, and eye and ear protection. There is a Range Safety Officer on duty at all times.

Tournament Schedule:			
Match	Range	Day	Time
ARA Rimfire	4B	3 rd Friday	Call range
Smallbore F-class	4A	1 st Saturday	0800-1100
22 Rimfire Benchrest	4B	1 st Saturday	1000-1400
Club 1800 Pistol	7	1 st Sunday	0900-1200
High Power Rifle Prone	3	2 nd Saturday	0800-1100
Black Powder	4	2 nd Saturday	0800-1100
High Power Rifle XTC	3	2 nd Sunday	0800-1100
NRA 1800 Bullseye	7	3 rd Sunday	0900-1200
Concealed Pistol/Home Defense Shotgun Match	5	3 rd Sunday	0900-
Smallbore Silhouette	4	4 th Saturday	0800-1400
Cowboy	5	4 th Saturday	0900-

Note: The above schedule is periodically subject to change: please check the website

Disclaimer

The Muzzleblast is published periodically by Lori Hallauer under the direction of the Gateway Rifle & Pistol Club. All newsletter content to be approved by the GRPC prior to publication. Technical and/or handloading data are for informational purposes only. No responsibility is accepted for results obtained by persons using such data, and all liability for any consequential injuries or damages is disclaimed. References herein to any specific commercial product, process or service by trade name, trademark, manufacturer or otherwise, does not necessarily constitute or imply endorsement, recommendation or favoring by The Gateway Rifle & Pistol Club, Inc., its Board of Directors, its membership, the editor, nor the Publisher. Letters to the editor should be brief, to the point, of firearm-related interest and contain the signature, address and telephone number of the sender. Letters to the editor do not necessarily reflect the views of the editor, publisher or Gateway Rifle & Pistol Club. Send submissions to: Gateway Rifle & Pistol Club, 9301 Zambito Rd., Jacksonville, FL 32210 or to the Muzzleblast editor at: redhawks1980@hotmail.com.

Thank you for reading! If you would like to submit information, articles, or match scores, please send them to:

Gary Kight at gdk1969@yahoo.com or
Lori Hallauer at redhawks1980@hotmail.com

Disciplines/Contacts:
IR 50/50 22 Benchrest Russ Ost RussOst@bellsouth.net
Smallbore Rifle Silhouette Grit Preston Adam Smith 904.545.9435 904.801.6451
Single Action Shooting Society (SASS) Vivian Allen-Parido vivianallenmd@aol.com
High Power Rifle Marion Estes marionestes4952@gmail.com
3x20 High Power Rifle Grit Preston 904.545.9435
Black Powder Muzzle Loading Stan Goldy 904.859.8887
NRA/1800 Bullseye/2700 Bullseye Ted Carter 904.880.1715 or cdrcoach@reagan.com
Pellet Silhouette Mike Hicks 904.304.2265
Cowboy Action Vivian Allen-Parido vivianallenmd@aol.com
Junior Shooters Marion Estes marionestes4952@gmail.com
Smallbore F Class Emil Albertini 904.759.8672 or ejalbertini@comcast.net
Women's Programs Sue Carter 904.880.1715
Concealed Pistol/Home Defense Shotgun Willy Todorsky Willywhiskers@yahoo.com
Black Gun Owners and Education (BGOE) Jeffrey Howell 813.304.9774
ARA Rimfire Robert Atkinson, Mike Roy, or John O'Brien gatewayrimfire@gmail.com